

# **Community Engagement Information Pack**



**Pūwhakamua Reintegration Services**

Dear Sir/Madam

Enclosed is an information pack on the Pūwhakamua reintegration service, which has been operating for six years from Rotorua. The tenancy on our current property is coming to an end, and as such as we have now leased a section of land in the Waikite Valley district with plans to continue our vital services to the community.

Our organisation acts as a stepping stone for men who have completed their identified rehabilitation in custody and have been approved to continue their journey in a safe and highly accountable environment. During their residence with us, they will undertake daily life tasks and a range of upskilling programs. These will include vocational education, personal development and employment.

Our pre-selection process and our six-year track record at our Rotorua location ensure that our involvement in our new community will be only respectful and positive. Our service is highly regarded and supported by the Ministry of Justice, the New Zealand Parole Board, the Department of Corrections and community leaders throughout the Rotorua district. To be a member of Pūwhakamua is a privilege that has been earned through a robust referral process and stringent assessments – participants must commit to pursuing lasting change and become contributing members of society once again.

We expect to shortly commence work on our new site at Lot 1, 671 Puaiti Rd pending building and resource consent approval from Rotorua Lakes Council (RLC). We have attached our buildings and landscaping design for your reference. Earthworks will be required on site, and we believe these to be modest. The site will accommodate 10 men plus four staff in standalone cabins with shared ablution facilities. Our overall design is rurally appropriate with low environmental impact, and of a high building and landscaping standard.

A member of our Trust - alongside a representative from the Department of Corrections - will have delivered this printed information to you either in person or left it safely in your mailbox if several attempts at contact were unsuccessful. Any feedback that you provide to us after reading this leaflet will be included in our upcoming submissions to Rotorua Lakes Council. It is our intention to create positive relationships and contribute to the Waikite Valley community in ways that are considerate and beneficial for all and we hope you will make contact with us in due course.

If you have any questions or feedback on the information provided, please do not hesitate to contact the project team at the details provided on the last page of this leaflet.

Nāku noa,



**Doug Macredie**

Chairman - Tikanga Aroro Charitable Trust

## Pūwhakamua - “To shoot forth”

Pūwhakamua is a tikanga Māori reintegration service specifically for people who require support to return and readapt into the community. The Tikanga Aroro Charitable Trust, endorsed by Te Arawa elders, sponsors the Pūwhakamua concept which has been providing a pathway for men released to the community by the New Zealand Parole Board. These men observe stringent parole conditions alongside our own rigorous set of site rules, with high levels of accountability for the duration of their stay. More information around our service provision can be found on our website at <https://puwhakamua.org.nz/>

### The Residential Support Facility

The future Pūwhakamua site will be located in a rural environment approximately 30 minutes south of Rotorua. It will house up to 10 men who have been released on parole by the New Zealand Parole Board, having **completed their required rehabilitation and shown lasting commitment to positive change** whilst in custody. To ensure a smooth reintegration process, some of the participants may be subject to either full or partial electronic monitoring. The site has four full-time employees; a General Manager and Operations Manager, and two Site Supervisors who are rostered on 24/7.

All residents are:

- **Randomly drug tested** at least once a week
- Expected to **participate fully** in all programme activities
- Under a **site wide curfew** from 10pm to 6am regardless of their release conditions
- Prohibited from contact with gangs (we do **not** take active gang members)
- Prohibited from having internet access/cell phones (if directed within their release conditions)
- Prohibited from taking drugs, drinking alcohol and vaping/smoking cigarettes
- **Prohibited from leaving the property without a member of staff or approved sponsor present**
- Prohibited from playing loud music or having social gatherings at any time
- At risk of removal from the programme or even recall to prison if found to breach site rules

Participants are transported to and from all community engagements, MSD and health appointments in either our company transit van or dedicated company cars. Participants are permitted their own vehicles for work commute purposes once they have graduated the programme and secured full time employment. All weekend visitors are vetted and approved by the General Manager before arriving at the property. All visitors (professional or social) are asked to sign in and out of the site as per health and safety guidelines.

As part of our resource consent application, we are including plans for CCTV at the **entrance to the site** to capture footage of any vehicles or individuals who access the section. We plan to enhance the existing boundaries with mature hedging (no unsightly high fences), and the gate across the entrance to the site will be shut between curfew hours (**2200 – 0600**) which all participants must adhere to. There is no reason for any movements to occur between these hours, unless a participant is employed on a night shift or there is an emergency. Should our neighbours require support with any urgent matters after hours that we can help with, they will be provided with phone numbers for our staff within the Site Management Plan.

Our partnership with Rotorua Community Corrections has resulted in **two dedicated Probation Officers** for the programme who visit the site regularly, and all interactions are conducted cordially in line with the expectations of the Tikanga Aroro Charitable Trust. The residential site has an **open-door policy for the Police** which would allow them to enter the property without a warrant. Participants know to give their full co-operation and to show respect to any official that enters the site without notice.

Since the start of operations in 2018, we have had **no incidents recorded with Police, or complaints received from the general public**. We live a peaceful existence and make a point of looking after our neighbours and ensuring the continued quiet enjoyment of their own property.

## Our Board of Trustees



**Chair** - Doug Macredie (Te Arawa, Tainui)

Doug has spent most of his life in education and training usually relating to primary industries and recognising the unique capability of Māori men to perform in the workplace. Currently Doug works for the Outdoor Access Commission advocating and protecting public access with a focus on mana whenua lands. Other roles include Māori trusts, national Māori forestry and environmental organisations and kaupapa.



**Deputy Chair** - Merepeka Raukawa-Tait (Te Arawa)

Merepeka brings extensive governance experience to the job of trustee. She was for 12 years an elected member of the Lakes District Health Board, 11 years a Rotorua Lakes Councillor and for the past 10 years has Chaired the Whanau Ora Commissioning Agency. She believes, with the right support, all New Zealanders can reach their potential, even those who have spent time in prison.



**Trustee** - Annette Sykes (Te Arawa, Ngāti Makino, Ngāti Pikiao)

Annette Te Imaima Sykes is a graduate of the University of Auckland and has been practising as a lawyer since 1984. She is principal of her own law firm, Annette Sykes & Co. Ltd, and she has appeared for clients in family and criminal courts nationwide. Annette is a member of the Māori Law Commission, which seeks to re-establish the operation of Māori systems of law and custom in Aotearoa. She is often called upon to speak on matters of Māori sovereignty, the Treaty of Waitangi and Māori justice at conferences throughout New Zealand and internationally.



**Trustee** - Alistair Burns

Specialising in all aspects of family, criminal and traffic law, Alistair graduated from the University of Waikato in 2007 and was admitted to the Bar in 2008. Since then, he has worked in Rotorua as a Barrister and has made regular appearances in the Rotorua Courts including the District, Family and High Court.



**Trustee** – Raymond Tolley (Te Arawa)

Ray is a builder by trade and currently represents his hapu Ngāti Te Kanawa as a trustee for the Rotokawa Baths.

## Build Project

We have appointed local architect Darin Grant as our project manager for the build – he is an avid supporter of our service and is passionate about seeing the build through to completion to elevate the wellbeing of the men on the programme. With the support of Hayson Knell planning consultants based in Tauranga, we will shortly submit our resource consent application to Rotorua Lakes Council to establish our activity at Puaiti Road with a view to **creating an environment that the surrounding community can be proud of**. A copy of the resource consent application can be provided in due course and will cover the planning and engineering aspects of the proposal in detail.

This accommodation model lends itself to a papakāinga (communal), full cultural immersion environment – the **opposite of traditional emergency or other transitional housing** for people released from prison. We are already operating as a dedicated space for our participants to heal and learn to be better men for their whānau and their community. Pending resource consent approval, completion of the upgraded facility at the Puaiti site is planned for mid-2025.

An architectural concept design and proposed site plan from Darin Grant Design are included as an appendix to this document to provide a visual representation of the layout for our proposed upgrade.

## Staff – Pūwhakamua



**General Manager** – Billy Macfarlane (Ngāti Pīkiao, Ngāti Rangiwēhē, Ngāti Whākaue)

Billy is the founder of the Pūwhakamua kaupapa which first launched in May 2018, which has grown from strength to strength under his leadership and unique vision to offer an alternative pathway back to the community. Billy delivers cognitive wānanga and te reo Māori lessons in both prison and community settings. He holds the role of Kaiwhakarite (General Manager).



**Operations Manager** - Sarah Beardsley (Poihākena, Ahitereiria)

Sarah has come to us from Serco New Zealand and has been involved with Pūwhakamua since 2020, with the start of wānanga services on site at Kohuora Auckland South Corrections Facility delivered by Pūwhakamua staff. She joins the kaupapa with a background in prison case management, contract compliance and project management within the justice system.



**Site Supervisor** - Joe Martin (Parewhero, Te Rawara)

Joe first started with Pūwhakamua as a participant in December 2021. He is well respected amongst our participants and always ready to lend a hand with day-to-day activities. Joe is the tuakana and is often relied upon as such in his role of Kaiwhakāū (Site Supervisor).





### **Site Supervisor - James Crichton (Hāmoa, Kōtarani)**

James first started with Pūwhakamua in June 2021, and was one of the first men to be paroled from Kohuora Auckland South Corrections Facility inaugural kaupapa Māori unit, *Te Whare o Te Whaiora*. James has a real respect for the Pūwhakamua concept, and enjoys the variety of his role of Kaiwhakaū (Site Supervisor).

## **Key Messages**

- Pūwhakamua is a tikanga Māori residential reintegration programme that has been successfully supporting men returning to the community since 2018.
- This location has been carefully chosen, and we want to engage with you on a long-term basis about how we can positively contribute to the community. Your feedback will also help to inform Rotorua Lakes Council within the resource consent process we are currently going through.
- Only men who are motivated to make positive change and are dedicated to learning more about Māori culture are accepted onto the programme. **No one who cannot be safely managed in the community can live at Pūwhakamua.**
- Men who are referred to our service go through a series of assessments from our Trust and Rotorua Community Corrections whilst still in custody well in advance of being granted parole by the NZPB.
- Our service is **too good an opportunity for participants to put their placement in jeopardy**; any breach of site rules, or their Parole Board imposed conditions could lead to them being removed and placed with an alternative service provider, or even face recall to custody.
- Participants are provided with opportunities to gain identification and obtain NZQA qualifications which lead to further study or meaningful employment – a first for many.
- Up to 10 men can be part of the Pūwhakamua programme at any one time. **There is a strict set of eligibility criteria already in place.**
- Pūwhakamua has had a long-standing relationship with the New Zealand Parole Board. The Board has recognised the positive impact the programme has made to our clients' lives and is ultimately responsible for deciding if people can be safely released into the community before the end of their sentence, and what conditions that person should continue to meet whilst in the community.

## **Public Safety**

- Since the inception of Pūwhakamua in 2018, there have been **no incidents that have impacted on the current local community in Rotorua**, and Police have not raised any concerns about the site.
- Safety of the community is our number one priority - all residents are thoroughly assessed to ensure that they are a good fit for the programme and motivated to work with the team at Pūwhakamua.
- Pūwhakamua staff are onsite 24/7. **This is not a prison or Corrections facility**, but staff will always accompany residents when they go off-site and there is an overnight curfew in place.

- We will be installing CCTV at the entrance to our site to capture anyone coming and going - this is mainly for the safety of our residents. There will also be a lockable gate.
- The men are not allowed to have their own vehicles unless transitioning into employment.
- All weekend visitors (numbers kept deliberately low) are vetted and approved by the General Manager before arriving at the property.
- **We do not consider active gang members for this service.** The institution of gangs does not align with the core values and teachings of our programme.
- There is a strict **no drug and alcohol policy** and men are randomly tested at least once a week.

## Community Engagement

- We want to be the **best neighbours possible** and to positively contribute to this community. We hope this initial engagement is the start for us to begin to build a relationship with all of our neighbours so they can make their own informed decision around this new venture.
- If you wish to provide feedback, our dedicated team will be available to meet with you at your house or at an alternative location that suits you. We will also provide **drop-in sessions** for community members.
- If you would like to meet with us, you can **email us** to schedule a meeting time. If you would prefer to have a chat over the phone, please let us know your contact number and someone from the team will contact you at a convenient time.
- If you are a tenant, we welcome the opportunity to speak with your landlord. Please feel free to **share this information** with your landlord or property manager so they are also able to contact us.
- We will be setting up a **Community Liaison Group** to connect the community into the service on a long-term basis. This provides an opportunity for any concerns to be raised by neighbours, alongside looking at ways for the men to positively contribute to our shared community. If you would like to be part of this group, please let us know via email or in person.

### Main point of contact for all enquiries related to this project:

Mel Bloxham - Senior Advisor  
Community Engagement and Reintegration

Phone: 027 206 3042

Email: [EngageCentral@corrections.govt.nz](mailto:EngageCentral@corrections.govt.nz)

**He aha te mea nui o te ao?  
He tangata! He tangata! He tangata!**

What is the most important thing in the world?  
It is people! It is people! It is people!



# TIKANGA ARORO CHARITABLE TRUST: PUAITI RD DEVELOPMENT, WAIKITE VALLEY



**THESE PLANS ARE TO BE PRINTED IN COLOUR**

**27/08/2024**



ARCHITECTURAL DESIGN SERVICES

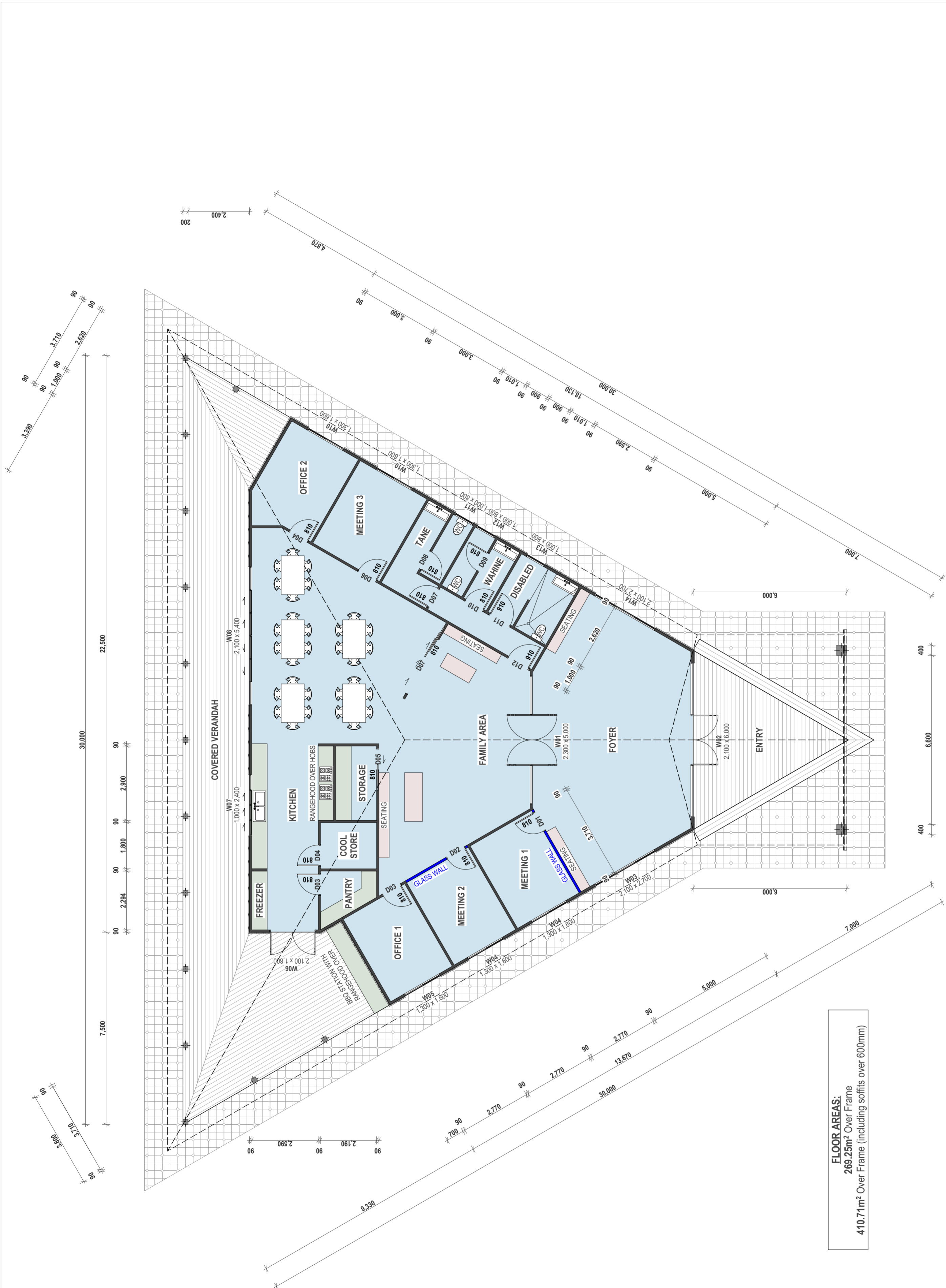
1122 PUKAKI STREET, ROTORUA  
DARINGRANTDESIGN@XTRA.CO.NZ  
027 6684 664



**THESE PLANS COMPLY WITH NZS3604:2011**

**E & OE APPLIES**





**FLOOR AREAS:**  
 269.25m<sup>2</sup> Over Frame  
 410.71m<sup>2</sup> Over Frame (Including soffits over 600mm)

STATUS:	CONCEPT 01	SHEET NO.	01
DATE:	23/08/2024		
SCALE:	1:100		
PROJECT NO.:	#DG20	DRAWN:	

**NOTES:**  
 PLANS ARE TO BE PRINTED ON A2  
 PLANS ARE TO BE PRINTED IN COLOUR  
 E & OE APPLIES

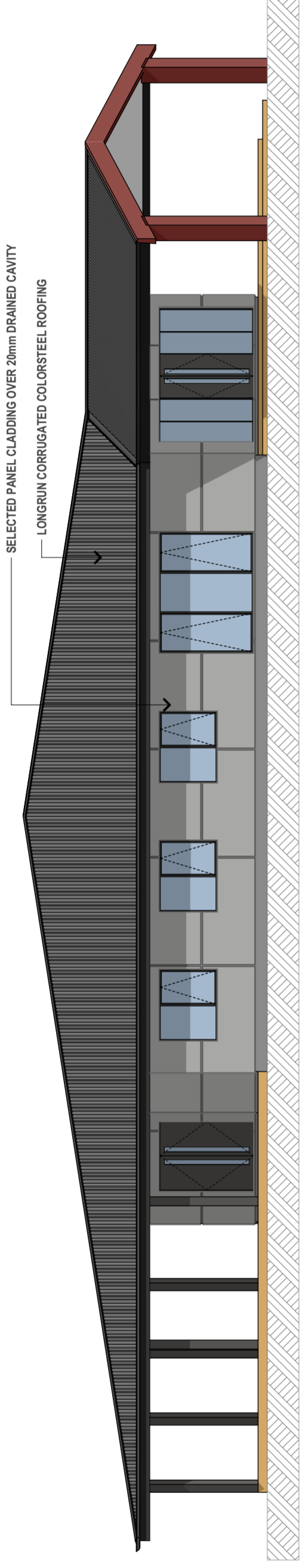
**TIKANGA AROARO CHARITABLE TRUST:**  
 PUAITI ROAD, WAIKITE  
 LAYOUT NAME:  
 FLOOR PLAN



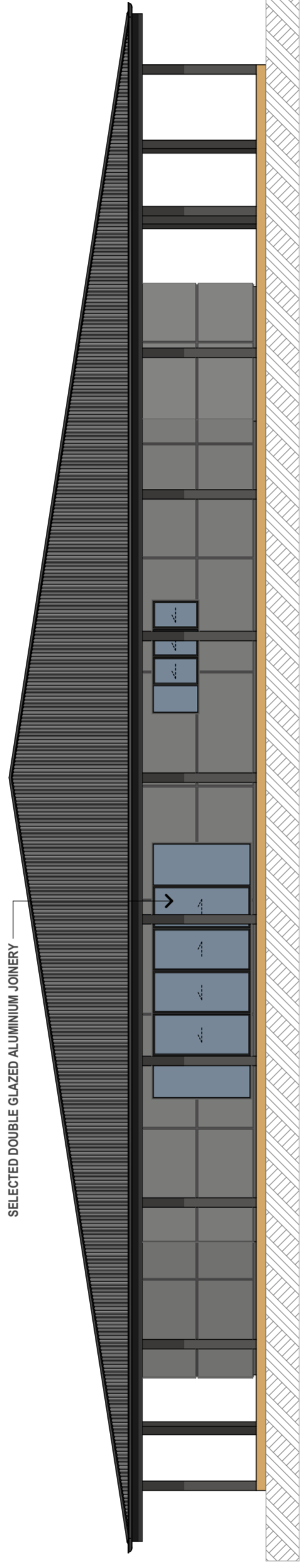
ARCHITECTURAL DESIGN SERVICES  
 1122 PUKAKI STREET, ROTORUA  
 DARINGRANTDESIGN@XTRA.CO.NZ  
 027 6684 664



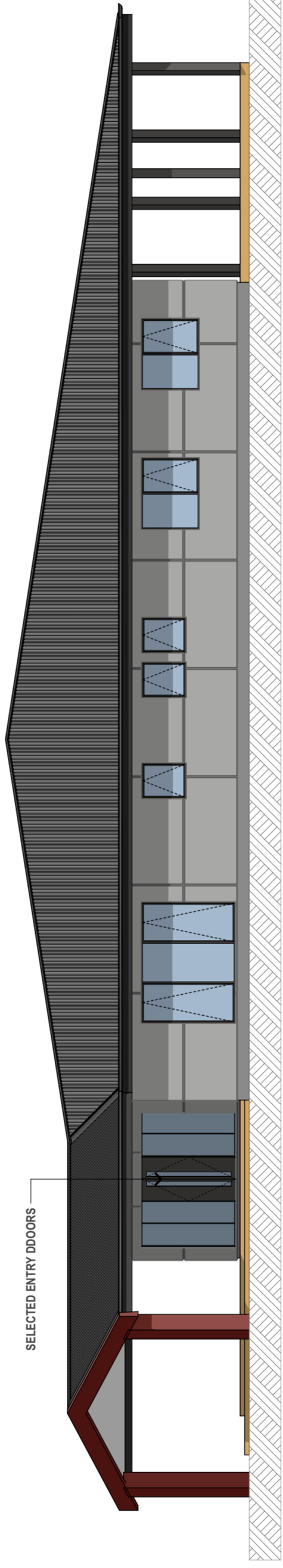




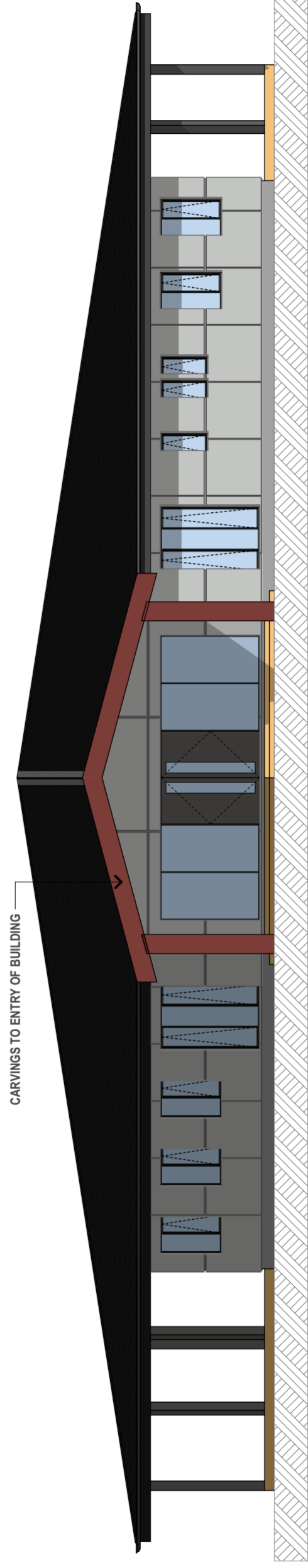
NORTH ELEVATION



EAST ELEVATION



SOUTH ELEVATION



WEST ELEVATION

ARCHITECTURAL DESIGN SERVICES  
 1122 PUKAKI STREET, ROTORUA  
 DARINGRANTDESIGN@XTRA.CO.NZ  
 027 6684 664



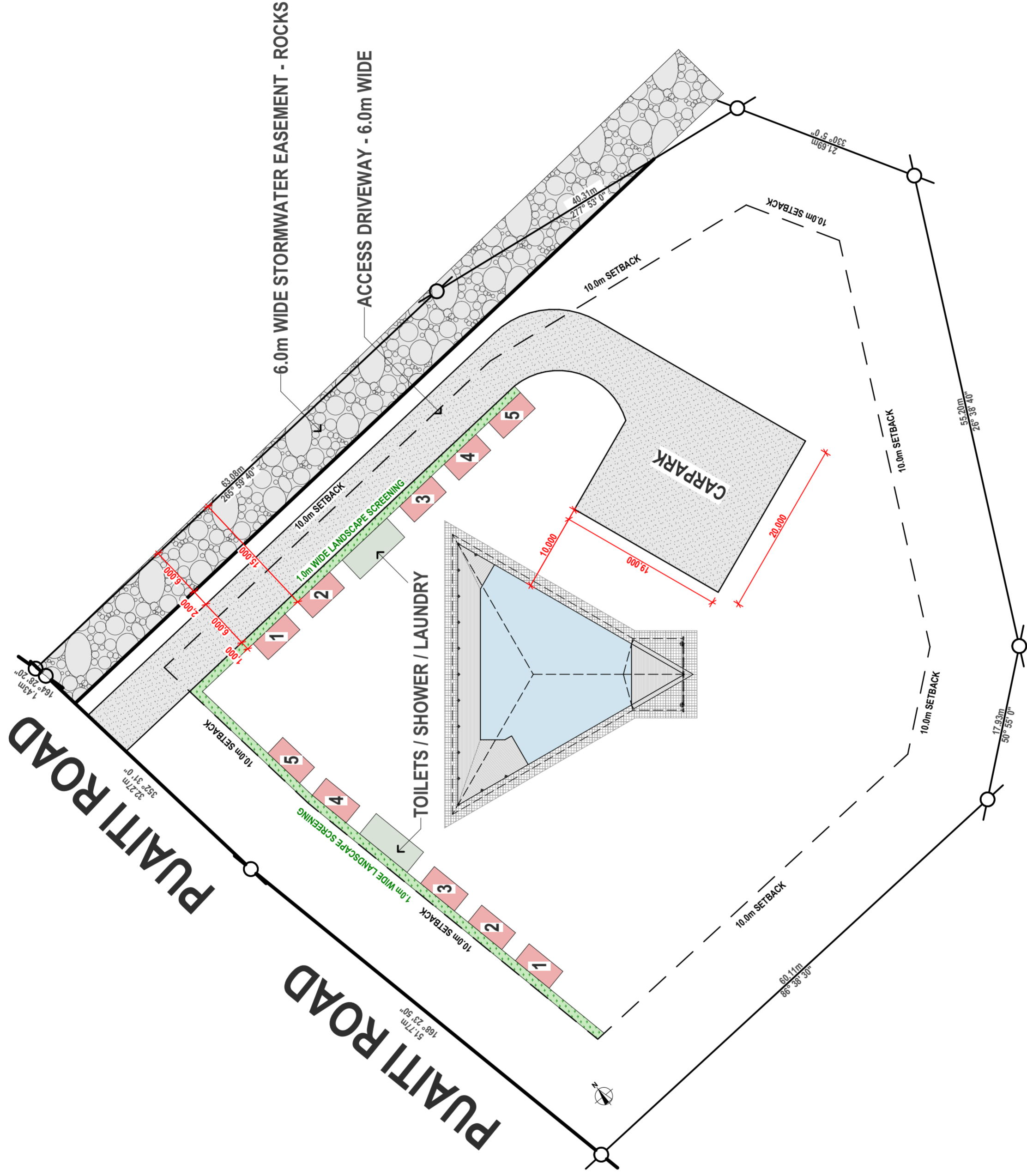
**TIKANGA ARORO CHARITABLE TRUST:**  
 PUAITI ROAD, WAIKITE  
 LAYOUT NAME:  
 ELEVATIONS

NOTES:  
 PLANS ARE TO BE PRINTED ON A2  
 PLANS ARE TO BE PRINTED IN COLOUR  
 E & OE APPLIES

STATUS:	CONCEPT 01	SHEET NO.
DATE:	23/08/2024	
SCALE:	1:100	
PROJECT NO.:	#DG20	
DRAWN:	LENNOX	







STATUS:	CONCEPT 01	SHEET NO.	<b>03</b>
DATE:	23/08/2024		
SCALE:	1:400		
PROJECT NO.:	#DG20		
DRAWN:	LENNOX		

NOTES:  
 PLANS ARE TO BE PRINTED ON A2  
 PLANS ARE TO BE PRINTED IN COLOUR  
 E & DE APPLIES

**TIKANGA ARORO CHARITABLE TRUST:**  
 PUAITI ROAD, WAIKITE  
 LAYOUT NAME:  
 SITE PLAN



ARCHITECTURAL DESIGN SERVICES  
 1122 PUKAKI STREET, ROTORUA  
 DARINGRANTDESIGN@XTRA.CO.NZ  
 027 6684 664

