



DEVELOPING LEARNERS FOR LIFE

16TH SEPTEMBER 2024

Waikite Valley School

1090 Waikite Valley Road, RD 1, Rotorua 3077 Tel 021 294 9633

www.waikitevalley.school.nz office@waikitevalley.school.nz

We are: **Confident, Optimistic, Unique, Respectful, Adventurous, have Grit, Enthusiastic**



Kia ora and Welcome to Week 9

What's on this week:

Thursday 19 Student Leaders to Reporoa

Friday 20 Waikite Speech Competition

Disco 4:30-6pm Junior, 6:15-8pm Senior

Kia ora koutou,

The results of the recent Waikite Valley School Board of Trustees by-election are as follows:

Jess Healey 20 votes

Denise Temata 25 votes

We would like to welcome Denise Temata onto the board and also say a big thank-you to both our candidates for putting your names forward.

ngā mihi nui,

Sophia Burton - Presiding Member, Waikite Valley School Board of Trustees

The Waikite Valley School P.T.A. are asking for donations to go towards raffle baskets at Pet Day. These can be bought into the office from now until the last day of term, Friday 27th September. Your help is greatly appreciated with this.

Thanks,

Denise Temata



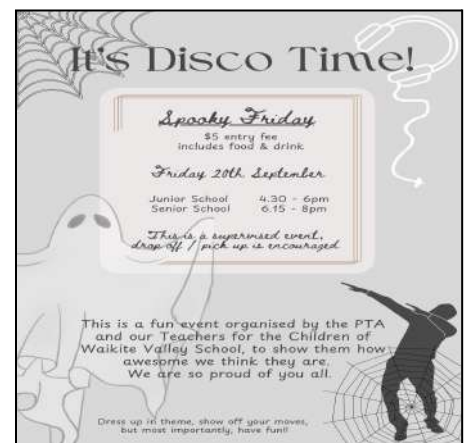
DISCO

The Disco is a pre-paid event!

If your child/ren are going to the disco on Friday can you please deposit \$5.00 per child into the P.T.A. account before Friday. This will help streamline entry.

12-3155-0164206-00

Denise



Term Dates

September

- 20 Disco
- 20 School Speech competitions
- 23 Human Growth & Development, yrs 6 - 7
- 24 Rip, Grip & Whip
- 24 Reporoa Cluster Speech Competition
- 26 Jack Te Nahu Speech Competition

End of Term Friday 27 September

TERM 4

Starts- Monday 14 October

- 15 Craft Day
- 16 Pet Day
- 22 CBOP Rippa Rugby Tournament
- 25 **Teacher only day- school closed**
Group Day
- 28 **Labour Day- school closed**

November

- 8 School Photos
- 12 Mayoral Visit
- 15 Student leader cluster conference yr 5-8
- 21 Reporoa cluster maths competition
- 28 Cluster athletics-Reporoa College

December

- 13 End of Year

Rippa Rugby Competition - Term 4 2024



When: Starts 7th November

Where: Koutu Intermediate

Who: Years 1 - 8

Cost: TBC

We will need Coaches for any teams we enter.

Please let the Office know if your child/ren would be interested in participating and/or if you'd be able to coach a team.



CRAFT DAY GUIDELINES

Get prepared over the holidays and bring in all your resources on **Tuesday 15th October** to make your crafts at school.

Vaseline Saucer

Upside down saucer covered with Vaseline, fully covered with petals and leaves, etc. The saucer will be judged on originality. Show imaginative use of petals leaves etc, design, neatness, use of colour, to be a well balanced finished saucer with overall impact.



Gumboot Floral Creation:

Children can bring in either an old single gumboot or a pair and use any flowers or leafy stalks to create an arrangement. They will be judged on height, use of colour and overall impact.



Recycled Animal

Children use any recyclable materials to create an animal of their choice. There is a height and width limit of 30cm.



Muffin Baking Competition for Room 3 and 4

Get cooking!!! Whip up your best batch of muffins with your favourite flavours-filling and/or topping. Judging will take place on craft day. So get practising and be in to win!!



Biscuit decorating competition for Pod 1 and Room 2

Get creative. Who can decorate the best biscuit? Send in your decorations and we will supply the biscuit. (super wine biscuit size)



Here's your chance to out do last years winner!!

*Dads cake competition will be back again this year at
Pet Day.*

**Entries can be delivered to the School Office by close
15th October, or taken to the Food Stall before 10.30 on
the day.**

*All cakes will be auctioned off at the end of Pet Day Prize
Giving, so be sure to hang around for a fun way to give back
to the school.*

There is a prize for the cake who gets the highest bid.

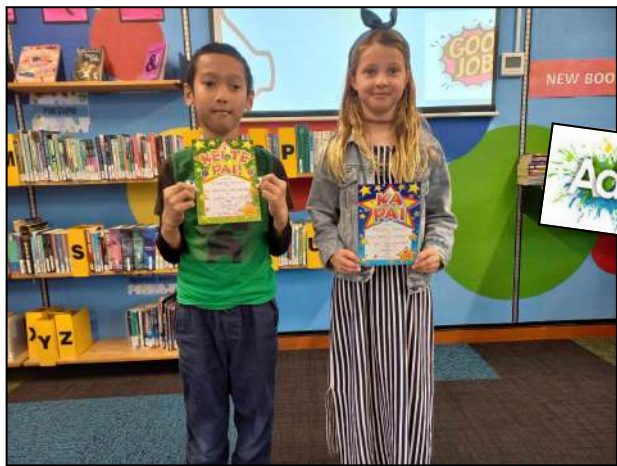
VALUES AWARDS - TERM 3, WEEK 8



Pod 1 - Charlie Mitchell & Ollie Oldfield



Rm 2 - Titoko Marshall - White, Nathan Barry & Twm Davies



Rm 3 - Clarence Delina & Isabelle Elliston



Rm 4 - Heidi Versteynen & Ashley Hunter



Principal's Award
Jenna Bain

PLEASE SUPPORT THE BUSINESSES THAT SUPPORT US.



GR8VANS
BUILDING LTD
PH 027 630 8245



CENTRAL
DRAINAGE & EARTHWORKS
Watson Elliston
Registered Drainlayer
MOBILE: 021 938 956
EMAIL: watson@centraldrainage.co.nz

DRAINAGE
Residential/Subdivisional
Septic & Bio Cycle Tanks
EARTHWORKS
All farm work:
- Races & Driveways
- Site Excavation
- Effluent Ponds
- Tree Removal
2.5 and 12 TON DIGGERS



FOUNDATION



BLUFF COUNTRY
CONTRACTORS

RICOH
imagine. change.



FARM SOURCE
Fonterra
Dairy for life



WAIKITE VALLEY
THERMAL POOLS
Springs 'n' Spa



CAROLYN MORRIS
M +64 21 292 2891
carolyn.morris@nzsir.com
New Zealand | Sotheby's
INTERNATIONAL REALTY
Each office is independently owned and operated. SIRD Limited licensed under the REAL 20081/ME/NZ.

grassroots
trust



SILVER FERN FARMS

100% MADE OF NEW ZEALAND

NZCT
NZ COMMUNITY TRUST

RDO FENCING
FOR ALL YOUR FENCING NEEDS



PH 027 229 4656

countdown




Farmlands



Shane Atkinson
BUILDERS
COMMERCIAL and RESIDENTIAL
021 222 9998
sa.builders@outlook.com

ASB
ONE STEP > AHEAD



ANIMAL HEALTH SERVICES