



DEVELOPING LEARNERS FOR LIFE

19TH AUGUST 2024

Waikite Valley School

1090 Waikite Valley Road, RD 1, Rotorua 3077 Tel 021 294 9633

www.waikitevalley.school.nz office@waikitevalley.school.nz

We are: **Confident, Optimistic, Unique, Respectful, Adventurous, have Grit, Enthusiastic**



Kia ora and Welcome to Week 5

What's on this week:

- BOT meeting 4pm Wednesday
- Year 7 & 8 Technology Wednesday
- Shelly Schnuriger and Simon Mara-Pet care Demonstration for parents and students Wednesday 12 noon

PET DAY 2024

Wednesday 16th October 2024

ANIMALS MUST BE BORN BETWEEN 20 JULY AND 25 SEPTEMBER

You will have the choice to rear and train a kid, lamb or calf. In the next couple of weeks, a form will come home for you to indicate what type of pet you are entering for the day.

If you would like a booklet on rearing a calf, kid or lamb this is also available from the office. Ask your child/ren to come and get one - included in this book are the details for training for each event at Pet Day and some handy hints on competing.



The day before pet day (Tuesday 15th October) will be our school craft day where all students will make either a flower craft, play-dough model, painting or other construction to demonstrate their skills. More details to follow. These will be judged after school and displayed on pet day (Wednesday 16th October).

The calves/lambs/kids that are awarded a place (1st & 2nd) in their ring have the opportunity to represent our school at the Group Day (Friday 25th October) hosted by Ngakuru School.

Please Return all Pet Day and Speech Competition cups to the Office A.S.A.P.



Waikite Valley School B.O.T. By Election.



Don't forget to get your votes in for the Board of Trustees Parent representative.

Our nominees are Jess Mitchell and Denise Temata.

Voting papers have been sent in the mail. If you require more please ask at the office, text 0212949633 or email office@waikitevalley.school.nz.

The election date is Wednesday September 4th.

If posted, your vote **must** be received by the returning officer no later than **5 days after the date of the election**. Try to post it as early as possible as New Zealand Post has reduced postal delivery days in most areas.

If delivering, you must deliver it before **4pm** on *Wednesday 4th September 2024*.

Kelly Curtis, Returning Officer

COMMUNITY HEALTH CONSULTATION-FINAL WEEK TO GET YOUR FEEDBACK IN!!!

Thank you very much to those who have already completed the survey. Your feedback is appreciated and I encourage everyone to respond.

Please click on the link to complete the survey. [Health & P.E Survey](#)
The survey will close Friday 23

Kind regards,

Sue Ratcliffe

Principal

Email: principal@waikitevalley.school.nz

Term Dates

August

- 21 BOT Meeting 4pm
Pet day demonstration for students and parents 12noon
- 23 Dan the Fireman Pod 1 and Room
- 27/28 Parent/Teacher/Student Meetings
- 29 Student leader's Day
Tough Guy and Girl
- 30 Cultural Festival- Reporoa College-Whole School

September

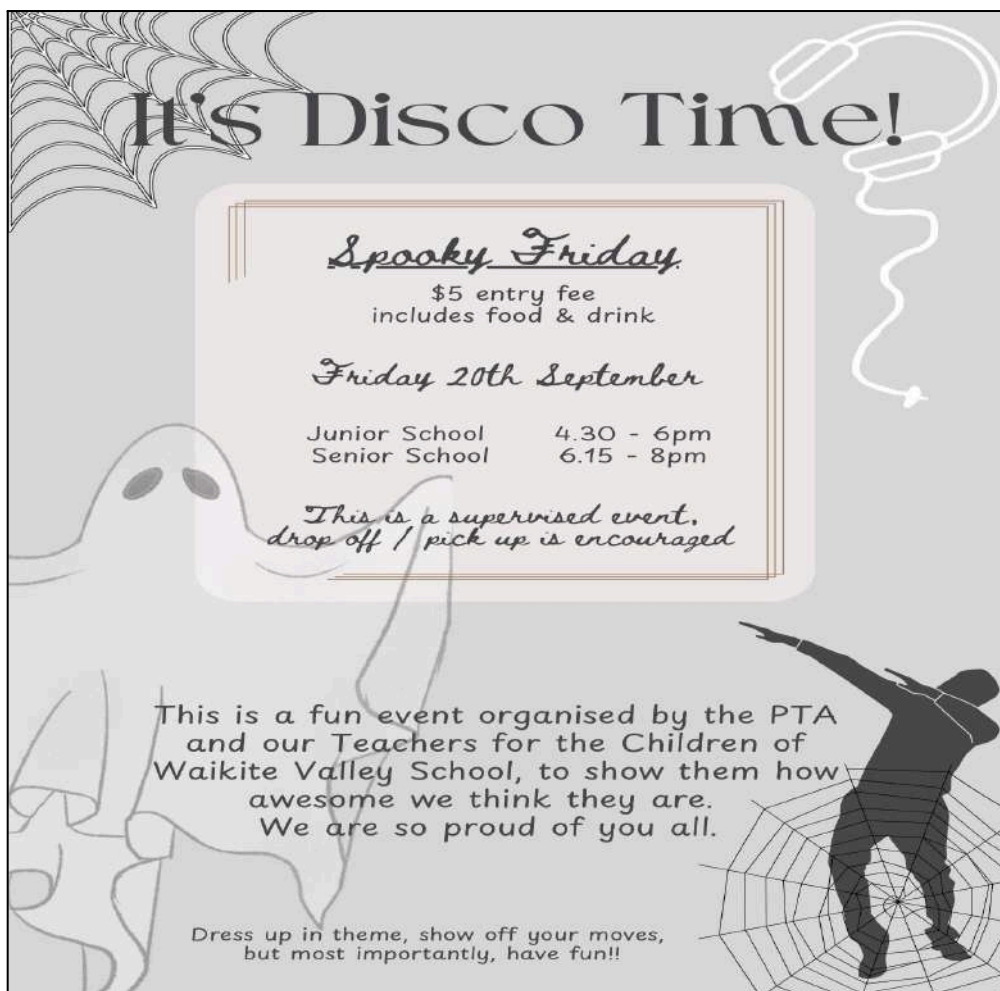
- 4-6 Snow Camp Yr 7 and 8
- 10 PTA Meeting 6:30 pm
- 9-13 AIMS GAMES Yr 7 and 8
- 13 Pet Day Vaccinations 2.30 by the kindy
- 16 WVS Speech Competition
- 17 Rip, Grip and Whip
- 20 Disco
- 24 Reporoa Cluster Speech Competition
- 26 Jack Te Nahu Speech Competition

End of Term Friday 27 September

TERM 4 Starts- Monday 14 October

Craft Day - Tuesday 15 October

Pet Day - Wednesday 16 October



School Futsal Competition, Term 4 2024

COACH NEEDED for the school to be able to register a team!!!!

If you have the capacity to commit to this could you please let the office know ASAP. There are limited spaces available.

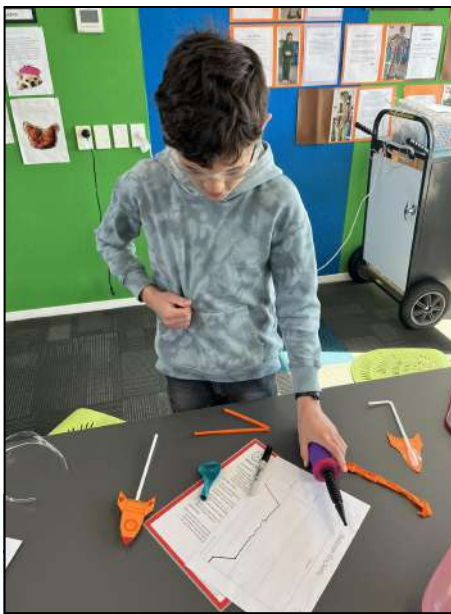
Futsal is indoor 5-a-side soccer played on a basketball sized court with 3m wide by 2m high goals. Each game has two 18-minute halves. Futsal is rapidly growing in popularity in New Zealand. Due to the small number of players required (five per team plus substitutes) it is easier for schools to find enough players for a team to give it a go.

A local school futsal competition will be run in term 4, 2024, on Sundays from 10:00am to 6:00pm at the Rotorua Girls' high School Arena in Rotorua. The competition is scheduled to run for seven weeks, starting October 20 and finishing December 8 (no games on Labour Day long weekend).

Pet Day Demonstration

Shelly Schnuriger and Simon Mara will be at school Wednesday 21- 12 noon to run through the calf, lamb and kid pet day expectations. Parents are welcome!!





VALUES AWARDS - TERM 3, WEEK 4



Pod 1 - Charlie Mitchell & Ollie Oldfield



Rm 2 - Ayla Roche & Beau Weston



Rm 3 - Ahu Mason - Wiremu & Monet Kidd



Rm 4 - Hine Mason - Wiremu & Blake Braithwaite



Principal's Award
Kayla Temata



Players of the Day



C.B.O.P. Winter Sports Hockey Players



PLEASE SUPPORT THE BUSINESSES THAT SUPPORT US.



GR8VANS
BUILDING LTD
PH 027 630 8245



CENTRAL
DRAINAGE & EARTHWORKS
Watson Elliston
Registered Drainlayer
MOBILE: 021 938 956
EMAIL: watson@centraldrainage.co.nz

DRAINAGE
Residential/Subdivisional
Septic & Bio Cycle Tanks
EARTHWORKS
All farm work:
- Races & Driveways
- Site Excavation
- Effluent Ponds
- Tree Removal
2.5 and 12 TON DIGGERS



FOUNDATION



BLUFF COUNTRY
CONTRACTORS

RICOH
imagine. change.



FARM SOURCE
Fonterra
Dairy for life



WAIKITE VALLEY
THERMAL POOLS
Springs 'n' Spa



CAROLYN MORRIS
M +64 21 292 2891
carolyn.morris@nzsir.com
New Zealand | Sotheby's
INTERNATIONAL REALTY

grassroots
trust



SILVER FERN FARMS
100% MADE OF NEW ZEALAND

NZCT
NZ COMMUNITY TRUST

RDO FENCING
FOR ALL YOUR FENCING NEEDS



countdown



PH 027 229 4656



Farmlands



Shane Atkinson
BUILDERS
COMMERCIAL and RESIDENTIAL
021 222 9993
sa.builders@outlook.com

ASB
ONE STEP > AHEAD



ANIMAL HEALTH SERVICES