



Waikite Valley School

Developing Learners for Life

1090 Waikite Valley Road, RD 1, Rotorua 3077 Tel 021 294 9633
facebook: <https://www.facebook.com/WAIKITEVALLEYSCHOOL/>

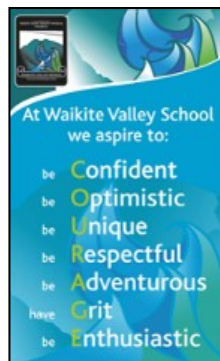


Weekly Panui - Monday 2nd March, 2020

Our School Charter 2020

Towards the end of every year we ask for feedback from students, parents, staff and the wider community regarding the strategic direction of our school. This information is collated, analysed and reoccurring themes used to form the goals for the year ahead. The goals below have been set for 2020 - on our school website the entire charter is posted (6 pages) that look specifically at HOW we are working to achieve these goals. A summary of our improvement plan is inside this newsletter also.

Teresa Topp (Principal)



FRIDAY 6TH MARCH

- ★ Rural Schools Swimming Sports at **Kaharoa School.**

Tues 10th March

- ★ RATS Duathlon

Weds 11th March

- ★ WVS BOT Meeting 6.30pm

TUESDAY 17 MARCH - FRIDAY 20 MARCH

- ★ **SCHOOL CAMP AT MICAMP WHAKAMARU (POD 2, ROOM 4 & GPA)**

Wednesday 25th March

- ★ PTA Annual General Meeting - Waikite Valley Hall, time to be confirmed

THURS 2 APR-FRI 3 APRIL

- * **TEACHER ONLY DAYS**

Learning & Teaching

Strategic Goal: 100% engaged students achieving within and above national standards in all core subjects

Annual Goal: All students will achieve success across all subject areas.

Students can describe mindfulness strategies & the purpose of these strategies.

Baseline data: December 2019:
Reading -Above 5%, Within 87%, Below 5%, Well Below 2%

Writing -Above 2 %, Within 91%, Below 5%, Well Below 2%/
Maths-Within 94%,Below 4%,Well Below 2%

Targets: High levels of achievement across all subject areas for all learners.

Students can describe mindfulness strategies and purpose for these strategies.

Retention of students/ Stabilize school roll of 85

Strategic Goal:To establish a school roll of 85

Annual Goal:To achieve a school roll of 85 & retain 15 students in Year 7 & Year 8

Baseline data:

At the close of school in December 2019 we have **83 students**.

We have 14 students in Yr 7/8, Jan, 2020

Targets: Hold school roll of more than 80 for the entire 2020 school year, looking to go into 2021 with 85 students.

Property

Strategic Goal:

To create a learning environment that supports current, up-to-date, transformational pedagogies and learning styles

Annual Goal:

Upgrades to Block C & Block D to be completed with all modifications creating I.L.E. environment for all learners and teachers. Exterior building repairs/maintenance & painting of whole school. School will seek funding to construct an all-season outdoor classroom.

Baseline data:

Two classrooms renovated with insulation, furniture, a learning loft & cave, tiered seating & colourful environment conducive to learning. 2 classrooms look straight out of the 1950's, little/no insulation & tired door fixtures.

Targets:

Innovative learning spaces are exemplified schoolwide. Plan and construct a functional outdoor classroom for a range of curriculum uses.

Community engagement

Strategic Goal: That 100% of our school whanau are actively engaged in their children's learning

Annual Goal: Aspirations of the community are reflected in the school environment and curriculum

Baseline data:

Attendance at social school events/evenings (approx. 75% of families present)

Attendance at curriculum based events/evenings (approx. 75%) - however, 100% at interviews and conferences

Attendance at future focused/planning events/evenings (approx. 50%)

Targets:

100% of parents involved in learning conversations with teachers.

100% attendance of parents at school evenings/events.

100% parent engagement in surveys/questionnaires.

"Developing learners for life"

Annual School Improvement Plan 2020 – SUMMARY

Domain	Achievement Challenge	Annual Goal	Target
Learning and Teaching	Resourcing experts across the arts to ensure all classes have the opportunity to engage in Music, Dance, Drama and Visual Art.	All students will have the opportunity to achieve success across all subject areas.	High levels of achievement across all subject areas for all learners.
	Teacher Aide resourcing to ensure all learners are supported to achieve their learning goals.	School staff set high academic expectations.	Students can espouse mindfulness strategies and purpose for these strategies.
	Time pressures on planning, implementing and assessing learning across all curriculum areas.	Local curriculum is accessible and engaging for diverse learners. Mindfulness and wellbeing are practised in all classrooms daily.	
Community Engagement	Overcoming complacency and content whanau apathy to create meaningful consultation. Finding a communication format that suits the majority of whanau and keeping communication regular and relevant. Updating website and facebook page is onerous and needs to be prioritized to achieve target - resourcing to support this is a challenge.	Parents/caregivers are welcomed into school at all times. Consultation is genuine and feeds into planning. Teachers reporting is relevant, accessible and meaningful to school whanau. A range of communication avenues are utilised.	Home-School partnerships are strong with 100% engagement in school surveys and reporting events. Whanau are communicated with efficiently and effectively - via newsletter (e-version or hardcopy), School FaceBook page, class FaceBook pages, ClassDojo, text, phone call, email
Property	Funding and availability of contracted resources are the major challenges to achieving this target.	Upgrades to Block C & Block D are completed with all modifications creating I.L.E. environment for all learners & teachers. School will access funding to construct an all-season outdoor classroom.	Innovative learning spaces are exemplified schoolwide. Plan and construct a functional outdoor classroom for a range of curriculum uses.
Retention of students	Bus route availability and regulations.	Values education is a strong underpinning of our schoolwide philosophy.	Students are safe and happy at school. Achieve school roll of 85 students.
	Ensuring cohort numbers are conducive to long-term friendships and positive social interaction. Accessing resources and time to ensure values are taught in a meaningful way.	All Year 6 & 7 students return for 2021. Kindy transition is managed strategically. The relationship between junior class and Kindy is fostered.	15 students in the GPA (Year 7/8) class. Enrolment of 5 year olds remains high and constant - with all local children attending our school.

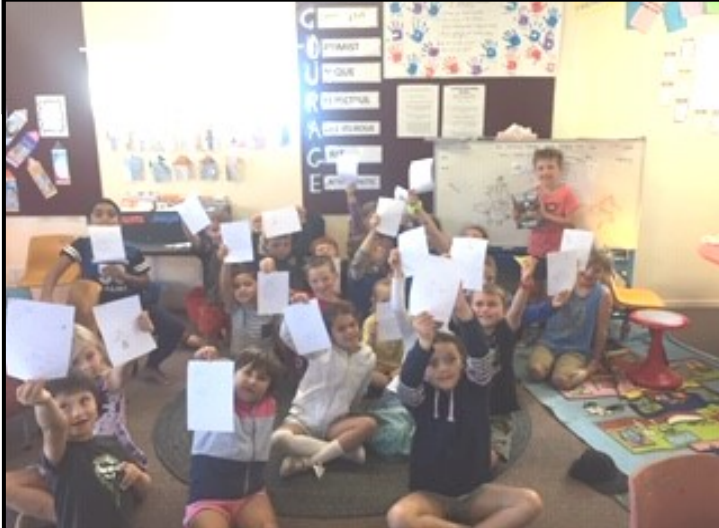
Celebrating Success!



Pod 1 had their first sharing assembly of 2020.

Teach Tuesday's in Pod 2 where the students become the teachers.

WVS Book Club organizers.



Waikite Valley School Board of Trustees



At our first meeting of the year (Wed 12 Feb) the Board duly elected Shelley Schnuriger as the Chair, our other Elected members are Edwin Schweizer, Mike France, Andrew La Grouw, Mary Briggs, Sarah Price (staff rep) & Teresa Topp (Principal).

Our next meeting is Wed 11 March (6.30pm). Our ratified minutes are available on our school website.



Hockey notices will be coming home in the next week or two - please have a think about whether you're going to join a team in 2020! :)



When you pick your child/ren up from After School Care, please let Amanda know you have taken them.

This makes sure we know where all of our lovely children are and we can be sure they are safe :)

Friends of Waikite Valley School



COMMERCIAL and RESIDENTIAL

021 222 9999
sa.builders@outlook.com



**FARMERS
FORESTRY**

- Woodlot logging specialists
- Pine, gum, poplar
- Guaranteed clean up
- Direct access to local & export markets

Phone Cam Negus 07 333 2169 / 021 034 8424



Waikite Valley School Leaders for 2020

We are: Confident, Optimistic, Unique, Respectful, Adventurous, have Grit, Enthusiastic

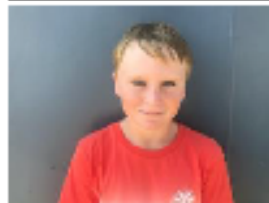
History of Ngati Tahu-Ngati Whaoa people

Our people have occupied these lands since the arrival of our Tupuna Ariki Tahu Matua. Tahu arrived here before the arrival of the seven waka from Hawaiki. Our Tupuna Whaoa arrived here some generations younger. We have asserted and maintained mana whenua and mana whakahaere through continued ahi karoa (occupation) and possession of our lands and taonga. Prior to the arrival of European settlers to Aotearoa, Ngati Tahu-Ngati Whaoa was an autonomous, independent and self governing confederation of 8 hapu. In more recent times the descendants of our many tupuna have operated as a single tribal grouping known today as Ngati Tahu-Ngati Whaoa.



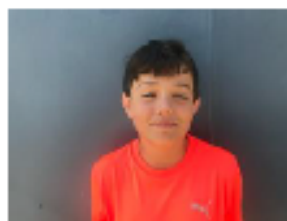
Whaoa School Leaders for 2020:

Whaoa House Leaders: Leion Brown & Bella Warren
Deputy Whaoa House Leaders: Syris Blake & Daniel Hornby



HOUSE LEADER-Leion Brown:

Year 7 – I am caring, loyal, honest, hard working, motivated to do well and a good team player. This year I am aiming to be the best I can be in all parts of school and to do my part in making the school the best it can be. I want to learn different skills and try new things even if they are a bit challenging.



DEPUTY HOUSE LEADER-Syris Blake:

Year 8 – I like helping my friends. My aim as a house leader is to teaching swimming, I am in the surf life saving club training to be a life guard.



HOUSE LEADER: Bella Warren:

Year 7 – I am happy, joyful and funny. I include people and am aiming to be more respectful. I am aiming to be the greatest horse rider.



DEPUTY HOUSE LEADER – Daniel Hornby:

Year 7 – I am an honest, kind, trustworthy, responsible young man with good manners. I am a trustworthy friend and brother, reliable mate and a helpful son. My aim is to be respected person.

CONGRATULATIONS TO OUR HEAD BOYS AND GIRLS – NEXT WEEK SPOTLIGHT ON TAHU LEADERS 🌟

Camp Gear List 2020

ALL CLOTHES MUST BE NAMED PLEASE

- o 2x Bath towels
- o Togs
- o Sleeping bag
- o Pillow with pillowcase
- o 3 pair long pants
- o 2 pair shorts
- o 5 shirts
- o 3 warm jerseys
- o Raincoat (waterproof)
- o Warm jacket or woollen shirt
- o Lunch box, Drink Bottle (labeled with your name) and school bag (You must bring a packed lunch the day we leave)
- o Pair of shoes or boots (not gumboots) for walking in the bush.
- o Pair of sandals/jandals/slip on shoes for wearing around camp
- o 5 pair of underwear



- o Toothbrush, hairbrush, soap, shampoo, and other toiletries in toilet bag or plastic bag
- o Pair of pyjamas
- o Torch
- o Reading Book
- o Games to play at camp (cards, small travel game etc)
- o Sun cream/insect repellent
- o Sunhat/cap and woollen hat/beanie
- o Plastic bag for wet/dirty clothes
- o 5 pair of socks

OPTIONAL...

- o Camp diary optional
- o Camera (responsibility of child)
- o Cell Phone to contact home (will be held by a camp teacher- please put in NAMED ZIPLOCK)

DO NOT BRING ANY TECHNOLOGY SUCH AS A NOTEBOOK/IPAD/PSP etc.